



WORKS FOR ME

SEBO DISCO Floor Polisher Head

Give your hard floors
a **high gloss** finish



Revolutionary. Sophisticated. Effective.

www.sebocanada.ca

SEBO DISCO Floor Polisher Head

The DISCO Floor Polisher attachment introduces a new sophisticated and highly efficient floor-pad technology that produces a high-gloss effect without the use of water, chemicals, or polishing sands. The new technology achieves its results by using four different floor pads, each of which is designed to accomplish distinctly different tasks. The pads are color-coded to assure proper selection. In addition, they are highly abrasion resistant and have a life expectancy of over 100,000 square feet.

The DISCO attaches to the SEBO FELIX vacuum cleaner, or any Premium SEBO Canister vacuum cleaner; therefore, it also has a suction capability that simultaneously removes the fine dust created during the polishing process.

The DISCO is truly a revolution in hard-floor care!



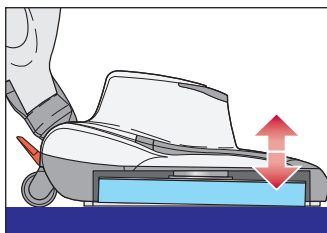
DISCO Onyx
#9433FC

FELIX 1
Premium Onyx
#9807FC
with DISCO
Polisher Head
Onyx
#9433FC

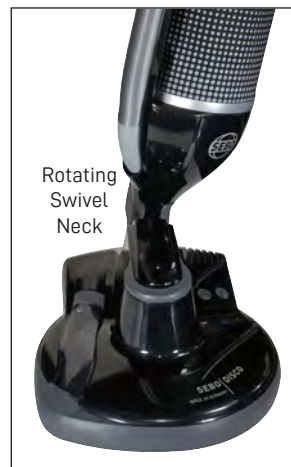


Three rubber-coated wheels to
protect floor surfaces.

Automatic height adjustment of
the floor pad, in relation to the floor
surface, ensures consistent and
optimal performance



Agile and easy to use due to a highly
maneuverable, 180° steering
mechanism and high-quality castors



Rotating
Swivel
Neck

Lightweight, low-cost,
commercial-grade machine

Bumpers to protect walls,
furniture and the polisher

Automatic safety shut off
caused by disc obstructions
or suction blockages



Convenient machine width of 13-inches and a polishing path of
11.5-inches means it can also accommodate small and
medium-size furnished, hard-floor areas

How it works:

The Red, Yellow, Green and Blue Floor Pads

These three polishing pads restore the shine of dull, scratched and scuffed, hard-floor surfaces without the use of water, chemicals or polishing sands. The pads do the work using the following three-step procedure (soft coatings should not be present):

Step One - The Red Floor Pad

Removes the deepest or most visible scratches and smoothes the floor surface. Thus, it prepares the floor for the yellow pad.

Step Two - The Yellow Floor Pad

Restores a higher gloss finish and prepares the floor surface for the green pad.

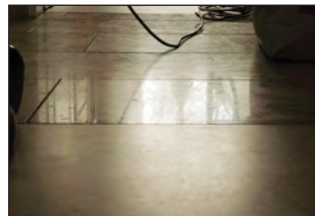
Step Three - The Green Floor Pad

Creates the final gloss finish in the "three-step process," and it is suitable for daily use to maintain the floor's high-gloss finish.

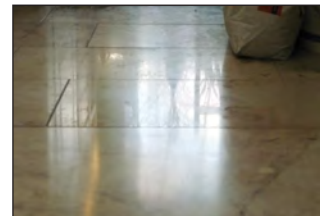
The Blue Floor Pad

Designed to maintain soft coatings, like wax, on hard floors, and it is suitable for daily use as well. It should be used along with a typical floor wax suitable for the specific floor surface or recommended by the flooring manufacturer. The DISCO has suction ability while polishing allowing it to remove the fine dust from fully dried floor-wax products.

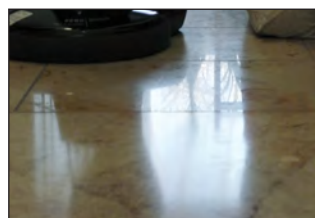
Original



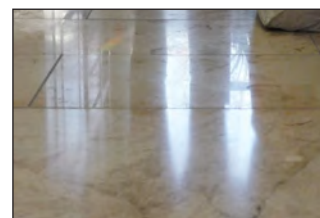
Step One: The Red Floor Pad



Step Two: The Yellow Floor Pad



Step Three: The Green Floor Pad



Quick and Easy Pad-Change Mechanism



Reinforced drive disc that provides optimal floor contact and a speed of 2,000 rpm

The DISCO is usually suitable for the following types of floors:

- PVC (coated or uncoated vinyl or vinyl composite tiles)
- Natural stone, such as granite, marble, or terrazzo
- Acrylic or polyurethane-coated floors
- Hardwood with oil or varnish finishes
- Hardwood or other floors with soft-coated finishes, like wax (use the blue floor pad only)

The DISCO is NOT suitable for the following types of floors:

- Any floor on which a shiny finish is not desired
- Glazed, ceramic and porcelain tiles, or porous tiles such as terracotta or slate
- Cushioned vinyl, linoleum, laminate, and any floor types that are poorly bonded to the sub-floor.
- All floors with textured or uneven surfaces or tiles with raised edges
- Floors with maintenance-free coatings, floors in which acceptability of the polisher is uncertain, or when polisher use is contrary to manufacturer recommendations.

*** PLEASE NOTE:** Suitability of all floor surfaces should first be determined by consulting the manufacturer recommendations, and then by testing the DISCO and its four pads in an inconspicuous spot. If floor damage occurs, immediately discontinue use.

STANDARD FEATURES OF SEBO VACUUM CLEANERS

World's Best Pet Vacuums

Because of superior powerhead and brush-roller technology, SEBO vacuums are the world's best for pet hair removal!



S-Class Filtration

Three stages of hospital-grade filtration ensure long-lasting performance and cleaner air. Each model is equipped with an S-class, pre-motor microfilter, a three-layer Ultra Bag, and an S-class or optional HEPA, exhaust micro-filter. This system provides long-lasting filtration with smooth airflow, excellent suction performance, and meets the special demands of users with allergies or asthma.



Tightly Sealed Vacuums

Dirty air that flows through a vacuum can only be filtered completely if it does not escape into the room through seams or seals in the machine. Therefore, all SEBO vacuums are tightly sealed throughout to completely filter the air.

The British Allergy Foundation recommends SEBO filters as they are excellent for users with allergies or asthma.

Did you know?

Most vacuum cleaner manufacturers make high-filtration claims based on specifications of the filter material that are measured in a laboratory, and not the filtration effectiveness of the vacuum itself while operating. Whether or not dirty air can escape through leaks in the body of the machine is not considered. **The filtration effectiveness of each SEBO vacuum is tested while they operate.**

Changing Bags is Easy and Clean

SEBO filter bags can be changed in just a few seconds, and a hygiene cap keeps dust sealed inside during removal and disposal.



Rubber Wheels and Soft Bumpers Protect Homes

Smooth-gliding rubber wheels protect hard floors and provide exceptional maneuverability. In addition, the bumpers that surround the powerheads and the soft AIRBELT bumpers that surround SEBO's canisters protect furniture, walls, and vacuum housings from incurring scuffs and scratches during use.



Advanced, Brush-Roller Technology

SEBO's brush rollers are uniquely designed to funnel hair and debris into the powerhead's airflow channel, which improves vacuum cleaning performance on all flooring surfaces.



Reliable, Commercial-Grade Components

All SEBO vacuums are constructed with thick, reinforced, ABS plastic, aluminum and metal parts, steel axles and bearings, and high-end, quality motors. This means all SEBO customers own reliable, long-lasting vacuum cleaners.



Incredible Warranty Coverage

All SEBO models include a **FREE TEN-YEAR WARRANTY** on the motor and non-wear parts and a 5-year warranty on labor charges (must complete online warranty registration on our website at seboCanada.ca to qualify).

The AUTOMATIC X models offer a lifetime belt warranty.



OUR SEBO STORY

SEBO was established in 1978 by two German engineers, Klaus Stein and Heinz Kaulig, who were seeking to build a reliable, powerful, and easy to use commercial upright vacuum cleaner. The name SEBO stands for **SE**migewerbliche **BO**denpflege, which is German for semi-commercial floor care.

The first shipment of vacuums to the U.S.A. was in 1979 for commercial cleaning customers, followed by the Duo-P Cleaning Powder in 1984, and finally the household vacuums were launched in 1997.

Since then, SEBO has become the most important manufacturer of high-quality, commercial vacuum cleaners in the world, with sales in Europe, Asia, Africa, and North America. Millions of SEBO vacuums have been sold to hotels, hospitals, schools . . . even The White House!

Today, SEBO is the global leader in commercial upright vacuums and stands as a synonym for high-quality vacuums in commercial and retail markets worldwide.



SEBO was the WORLD'S FIRST vacuum manufacturer to introduce:

- An integrated suction hose on an upright vacuum
- A timing-belt-driven brush with clutch protection
- A dust bag that fills from the top, followed by a microfilter and then the motor
- An electrostatic microfilter
- An electronic brush control and safety shut off
- A soft bumper on a canister vacuum, which protects furniture and walls from damage
- An electronically controlled automatic height adjustment, an S-class filtration, and a detail wand with telescopic hose

To this day, they are the most modern vacuum cleaners in the world!

THE SEBO FILTRATION SYSTEM

Why Are Bags Better?

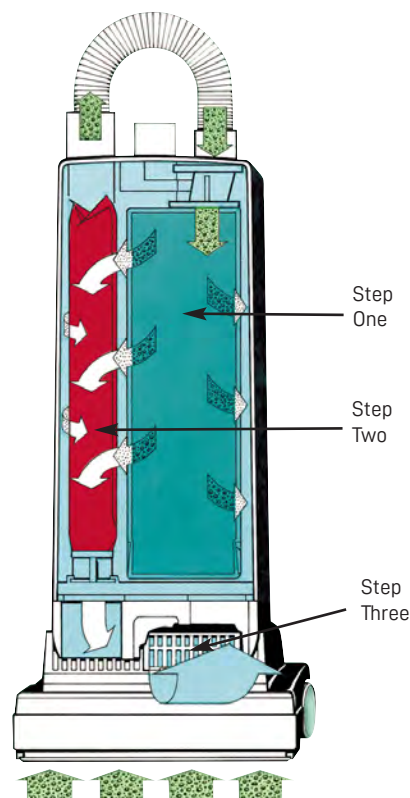
Top-fill, three and four-layer Ultra Bags are an integral part of SEBO's filtration system because they hold virtually all the dirt captured by the vacuum, which improves the effectiveness and useful life of the microfilters.

They also ensure continuously strong suction because dirt enters from the top, deposits at the bottom, accumulates upward, and air exits through the sides, which allows unimpeded airflow as they fill to capacity. And they can be tightly sealed with a hygiene cap when full, so no dust can escape into the air during bag removal and disposal.



Did you know?

The micro-filters on bagless vacuums quickly clog from excessive dirt build-up and must be replaced often, or a loss of suction and cleaning effectiveness will occur. In addition, dust and other allergens become airborne when emptying bagless dirt containers. Bagless vacuum micro-filters are expensive and usually cost more than a multi-year supply of SEBO filter bags.





MADE IN GERMANY

A lot can happen in 10 years.
We have you covered.



www.sebocanada.ca